

Preset counters, electronic

LED preset counters Dual preset counters with 4 switch outputs and analog output **572**



Counter series for demanding applications with two individually scalable encoder inputs, each A, /A, B, /B, for count frequencies up to 1 MHz per channel.

Programmable operating modes include position or event counter, totalizer, difference counter, cut-to-length display, diameter calculation and many more.



AC/DC 24/17...30V	000000 DIN 96 x 48	IP65	max. 1 MHz			123... 6/8 LED	DC OUT 5 / 24 V		4	RS 232 / 485
Power supply	DIN front bezel	High protection level	2 inputs	Operation with gloves	TTL, HTL and RS422 input	LED display	2 x sensor power supply	Analog output optional	Transistor output	Interface

Innovative

- 3 display values: counter 1, 2 as well as calculation-based display.
- 2 separate freely scalable count inputs: HTL or TTL (also with inverted inputs) max. input frequency 1 MHz/channel.
- Very bright LED display, 15 mm (6-digit) and 10 mm (8-digit) high.
- 4 freely programmable fast solid-state outputs, each with 350 mA output current.
- Step or tracking presets.
- Simple programming – with function codes, dependent on the operating mode selected.
- With 8 different fixed count functions, such as simple count, difference count and total count of both inputs, batch counter etc.

Compact and multifunctional

- One device caters for AC and DC power supplies.
- Simple programming with 4 keys and programmable dual functions.
- Can be used as counter or position display with limit values, where 2 values are monitored or calculated with respect to each other.
- 4 fast, programmable inputs with various functions, such as reset, gate, display memory (store), reference input or switching between the display values.
- Scalable analog output 0/4 ... 20 mA, ±10 V or 0 ... 10 V.
- RS232 interface as standard (RS485 optional), for parameter setting, readout of values or for modifications during operation.
- 2 auxiliary power supplies for sensors: 5.2 V DC and 24 V DC.

Order specifications

4 fast switch outputs and serial interface (RS232)

	Order no.
6 digits	6.572.0116.D05 ¹⁾
6 digits, RS485	6.572.0116.D75
6 digits, scalable analog outputs	6.572.0116.D95 ¹⁾
8 digits	6.572.0118.D05 ¹⁾
8 digits, RS485	6.572.0118.D75
8 digits, scalable analog outputs	6.572.0118.D95 ¹⁾

Delivery specification

- Controller 572
- Gasket
- Fastening set
- Instruction manual German/English

1) Stock types

Preset counters, electronic

LED preset counters Dual preset counters with 4 switch outputs and analog output 572

Accessories	Dimensions in mm [inch]	Order no.
Mounting frame with cut-out 92 x 45 [3.62 x 1.77]	for snap-on mounting on 35 [1.38] top-hat DIN rail, for counters 96 x 48 [3.78 x 1.89]	grey G300005
OS6.0 software for parameter setting		can be downloaded at www.kuebler.com



Suitable gaskets as well as further accessories can be found in the accessories section or in the accessories area of our website at: www.kuebler.com/accessories.

Technical data

General technical data	
Display	6 digits LED display, 15 mm mm [0.59"]high 8 digits LED display, 10 mm mm [0.39"]high
Operating temperature	0°C ... +45°C [+32°F ... +113°F] (non-condensing)
Storage temperature	-25°C ... +70°C [-13°F ... +158°F]

Electrical characteristics	
Power supply	24 V AC, + 10 % 24 (17 ... 30) V DC
Current consumption DC	100 mA + current consumption encoder
Connected load AC	15 VA
Auxiliary power supply output for sensors	2 x 5.2 V DC, each 150 mA 2 x 24 V DC, each 120 mA
EMC standards	EN 55011 class B, EN 61000-6-2, EN 61000-6-3, EN 61326-3-2
Device safety	designed to protection class 2 application area pollution level 2

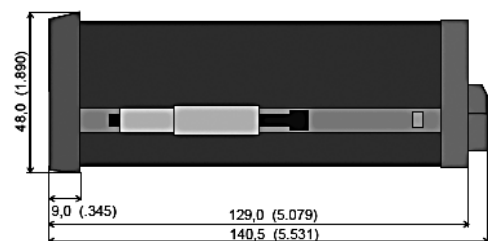
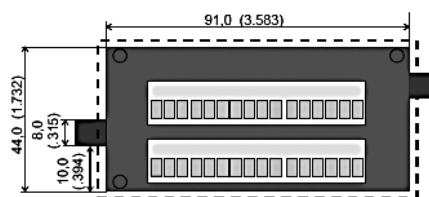
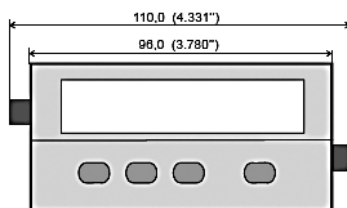
Mechanical characteristics	
Housing	Noryl UL94-V-0
Screw terminal	cable cross-section max. 1.5 mm ² [AWG 25]
Protection	IP65 (front side)
Weight	approx. 250 g [8.82 oz]

Inputs	
Universal incremental encoder inputs	2
Count frequency (per encoder)	RS422 and TTL with Inv. 1 MHz HTL asymmetric 200 kHz TTL asymmetric 200 kHz
Control inputs HTL	4
Input resistor	3.3 kOhm
Switching level	LOW < 2.5 V HIGH > 10 V
Min. pulse duration	50 µs

Outputs	
Switch outputs	
4 fast power transistors	5 ... 30 V DC, 350 mA
Reaction time	< 1ms ¹⁾
Inductive loads require a freewheeling diode	
Serial interface	RS232
2400 ... 38400 Baud	RS485 (6.572.011X.D75)
Analog outputs	
Current	0 / 4 ... 20 mA
Load	max. 270 Ohm
Voltage	0 ... +10 V (max. 2 mA)
Resolution	14 bit
Precision	0.1 %
Reaction time	< 1 m

Dimensions

Dimensions in mm [inch]



Panel cut-out 92 x 45 mm [3.62 x 1.77]

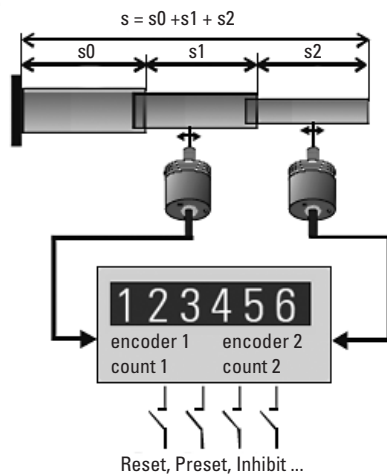
1) Intensive serial communication can temporarily prolong the reaction time

Preset counters, electronic

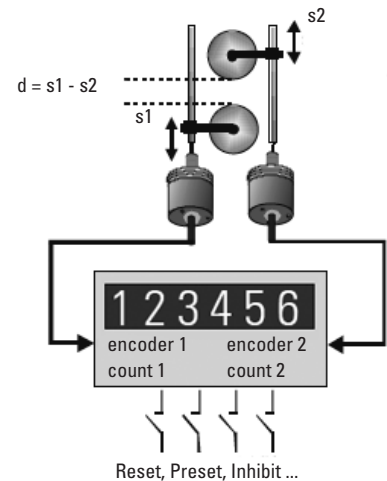
LED preset counters Dual preset counters with 4 switch outputs and analog output 572

Application examples

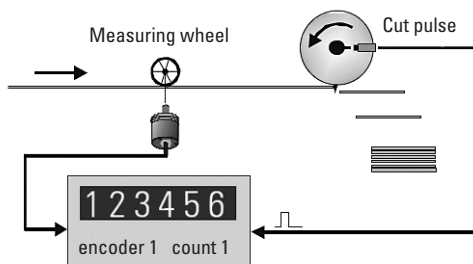
Total position display



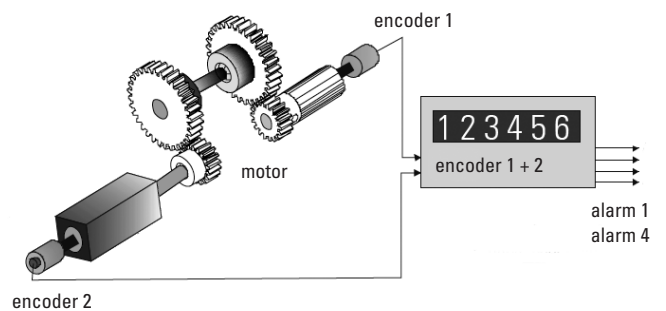
Difference position display



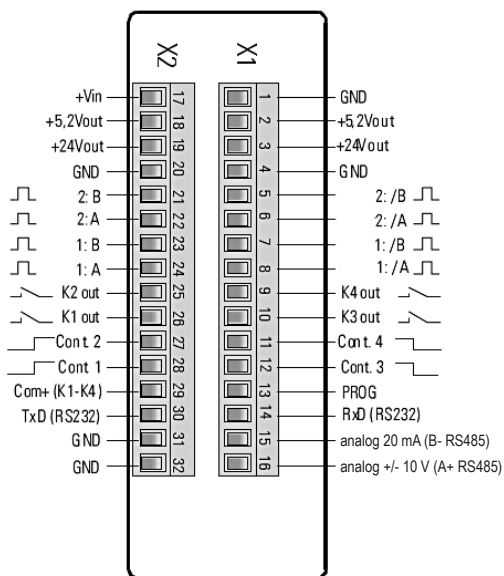
Measurement of the effective cut amount



Monitoring of torsion, shafts or gear breakage



Terminal assignment



Connection examples

Example shows encoder with 5 V-supply and TTL / RS422-output

