

MK3

WITH EXPANDING SHAFT

0.5 - 10 Nm



PROPERTIES

FEATURES

- ▶ for hollow shaft mounting
- ▶ easy to install
- ▶ light weight and low moment of inertia

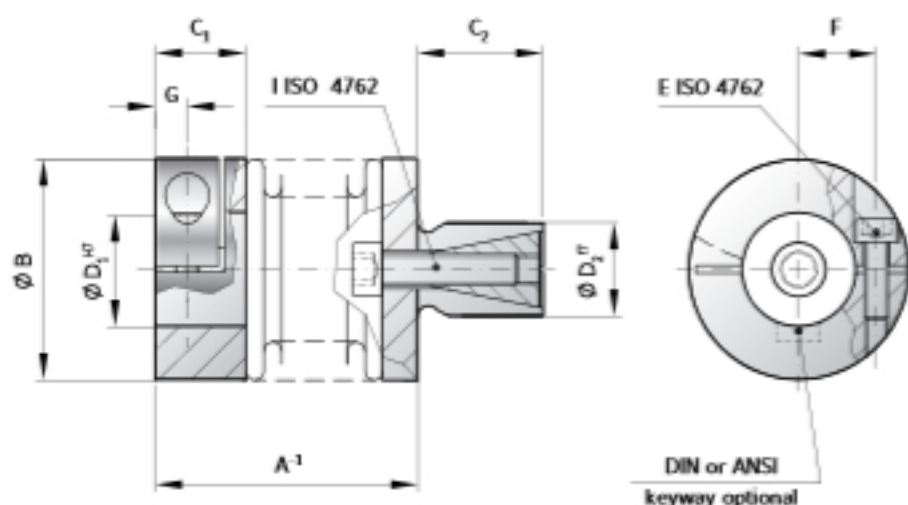
MATERIAL

- ▶ **Bellows:** high grade stainless steel
- ▶ **Clamping hub:** aluminium

▶ **Expanding shaft:** steel

DESIGN

One clamping hub with one clamping screw, one expanding shaft system, both concentrically mounted to flexible bellows.



MODEL MK3

SIZE	5			10			15		20			45		100				
Rated torque (Nm)	0.5			1			1.5		2			4.5		10				
Overall length (mm)	A ⁻¹			20	23	26	22	25	28	24	30	27	33	36	36	44	41	51
Outside diameter (mm)	B			15			19			25			32		40			
Fit length (mm)	C ₁			9			11			13			16		16			
Shaft length (mm)	C ₂			10			12			12			15		20			
Inside diameter possible from Ø to Ø H7 (mm)	D ₁			3-7			4-8			4-12.7			5-16		6-24			
Standard shaft possible from Ø to Ø f7 (mm)	D ₂			8-10			8-10			10-14			14-20		16-24			
Fastening screw ISO 4762	E			M2			M2.5			M3			M4		M4			
Tightening torque of the fastening screw (Nm)	E			0.43			0.43			0.85			2.3		4		4.5	
Distance between centerlines (mm)	F			4.5			4.5			6			8		10		15	
Distance (mm)	G			3			3			3.5			4		5		5	
Fastening screw ISO 4762	I			M3			M3			M4			M4		M5		M6	
Tightening torque of the fastening screw (Nm)	I			1.5			1.5			3			4		6.5		11	
Moment of inertia (gcm ²)	J _{ges}			2.6	2.8	3.0	3.0	3.4	3.6	8.5	9.5	25	27	29	100	108	160	205
Torsional stiffness (Nm/rad)	C _T			280	210	170	510	380	320	750	700	1200	1300	1200	7000	5000	9050	8800
Axial (mm)	Max. values			0.4	0.5	0.6	0.4	0.5	0.6	0.5	0.7	0.5	0.6	0.7	0.7	1	1	1.2
Lateral (mm)	Max. values			0.15	0.2	0.25	0.15	0.2	0.25	0.15	0.2	0.15	0.2	0.25	0.2	0.25	0.2	0.3
Angular (degree)	Max. values			1	1.5	2	1	1.5	2	1.5	1.5	1.5	1.5	2	1.5	2	1.5	2

ORDERING EXAMPLE	MK3	20	36	6.35	12	XX
Model	●					
Size		●				
Overall length mm			●			
Bore D1 H7				●		
Shaft D2 f7					●	
Special designation only (e.g. special bore / shaft tolerance).						

For custom features place an XX at the end of the part number and describe the special requirements (e.g. MK3 / 20 / 36 / 6.35 / 12 / XX; XX-finely balanced for 25,000 rpm)