

MK2

WITH CLAMPING HUB

0.5 – 10 Nm

PROPERTIES

FEATURES

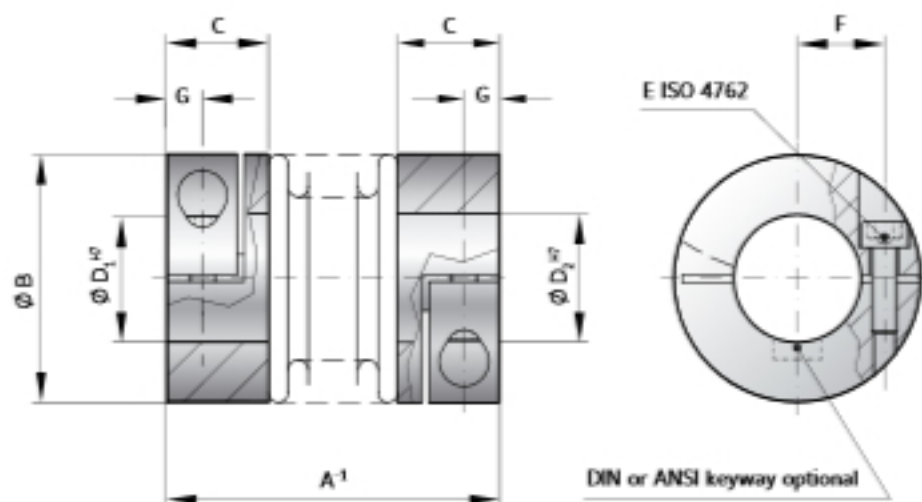
- ▶ for highly dynamic applications
- ▶ easy installation
- ▶ light weight and low moment of inertia

DESIGN

Two clamping hubs concentrically mounted to flexible bellows.

MATERIAL

- ▶ **Bellows:** high grade stainless steel
- ▶ **Hubs:** aluminium



MODEL MK2

SIZE		5			10		15		20			45		100		
Rated torque (Nm)	T_{en}	0.5			1.0		1.5		2.0			4.5		30		
Overall length (mm)	A^1	25	28	31	27	30	33	30	35	35	40	44	46	54	50	60
Outside diameter (mm)	B	15			15		19		25			32		40		
Fit length (mm)	C	9			9		11		13			16		16		
Inside diameter possible from \varnothing to \varnothing H7 (mm)	D_{in}	3-7			3-7		3-8		3-12.7			5-16		5-24		
Fastening screw ISO 4762	E	M2			M2		M2.5		M3			M4		M4		
Tightening torque of the fastening screw (Nm)		0.43			0.43		0.85		2.3			4		4.5		
Distance between centerlines (mm)	F	4.5			4.5		6		8			10		15		
Distance (mm)	G	3			3		3.5		4			5		5		
Moment of inertia (gcm^2)	J_{pm}	2.6	2.8	3	3	3.4	3.6	8.5	9.5	25	27	29	100	108	160	205
Approximate weight (g)		9	9	9	9	10	11	22	24	36	38	40	74	78	120	130
Torsional stiffness (Nm/rad)	C_t	280	210	170	510	380	320	750	700	1200	1300	1200	7000	5000	9050	8800
Axial (mm)	Max. values	0.4	0.5	0.6	0.4	0.5	0.6	0.5	0.7	0.5	0.6	0.7	0.7	1	1	1.2
Lateral (mm)		0.15	0.2	0.25	0.15	0.2	0.25	0.15	0.2	0.15	0.2	0.25	0.2	0.25	0.2	0.3
Angular (degree)		1	1.5	2	1	1.5	2	1.5	1.5	1.5	1.5	2	1.5	2	1.5	2

ORDERING EXAMPLE	MK2	5	25	4.76	5	XX
Model	●					
Size		●				
Overall length mm			●			
Bore D1 H7				●		
Bore D2 H7					●	
Special designation only (e.g. special bore tolerance).						

For custom features place an XX at the end of the part number and describe the special requirements (e.g. MK2 / 5 / 25 / 4.76 / 5 / XX; XX-finely balanced for 25,000 rpm)