

**EK1**

# WITH KEYWAY CONNECTION

1,950 – 25,000 Nm

## PROPERTIES

### FEATURES

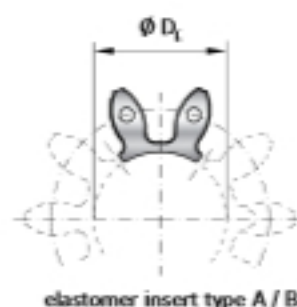
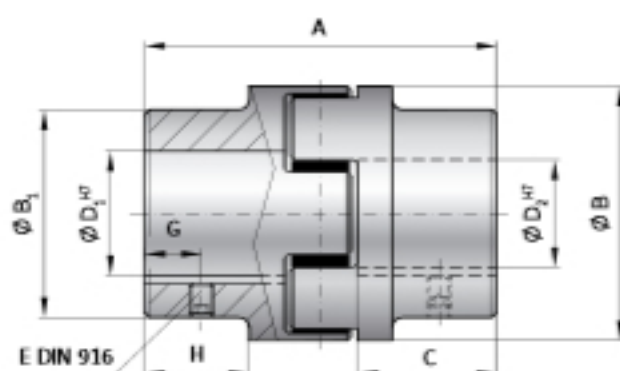
- ▶ press fit design
- ▶ readily modified for custom dimensions
- ▶ low backlash (keyway)

### MATERIAL

- ▶ **Hubs:** GGG40
- ▶ **Elastomer:** wear resistant thermally stable TPU

### DESIGN

Two concentrically machined hubs with curved jaws, keyways, and set screws. Elastomer insert consist of 5 segments.



## MODEL EK1

SIZE		2500		4500		9500	
Type (Elastomer insert)		A	B	A	B	A	B
Rated torque (Nm)	$T_{RN}$	1950	2450	5000	6200	10000	12500
Max. torque (Nm)	$T_{RMK}$	3900	4900	10000	12400	20000	25000
Overall length (mm)	A	213		272		341	
Outside diameter (mm)	$B/B_1$	160 / 154		225 / 190		290 / 240	
Mounting length (mm)	C	88		113		142	
Inside diameter (pilot bored) (mm)	$D_1$	30		40		50	
Inside diameter range H7 (mm)	$D_2$	30 – 95		40 – 130		50 – 170	
Inside diameter of elastomer (mm)	$D_3$	80		111		145	
Set screws (DIN 916)	E	see table (depending on bore $\phi$ )**					
Distance (mm)	G	25		30		40	
Possible shortening length (mm)	H	69		89		110	
Moment of inertia per hub ( $10^{-3}$ kgm <sup>2</sup> )	$J_1/J_2$	40		147		480	
Approx. weight (kg)		12.5		25		53	
Speed standard (min <sup>-1</sup> )		3,500		3,000		2,000	
Speed balanced (10 <sup>3</sup> min <sup>-1</sup> )		10	10	8	8	6.5	6.5

For information on shaft misalignment, torsional stiffness, and other details about the elastomer inserts see pages 72 + 73.

ORDERING EXAMPLE	EK1	2500	A	50.8	80	XX
Model	●					Special designation only (e.g. special bore tolerance).
Size		●				
Elastomer insert type			●			
Bore D1 H7				●		
Bore D2 H7					●	

For custom features place an XX at the end of the part number and describe the special requirements (e.g. EK1 / 2500 / A / 50.8 / 80 / XX; XX-stainless steel)