

BKH

WITH SPLIT CLAMPING HUB

15 - 4,000 Nm

PROPERTIES

FEATURES

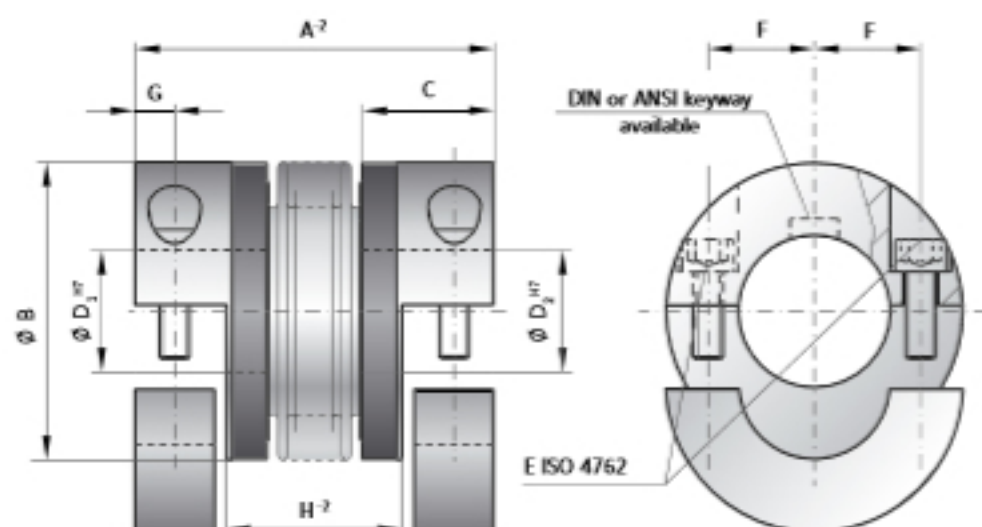
- ▶ radial mounting possible
- ▶ easy installation onto pre-aligned shafts
- ▶ low moment of inertia

MATERIAL

- ▶ **Bellows:** high grade stainless steel
- ▶ **Hubs:** see table

DESIGN

Two split clamping hubs with two screws in each. Brief overloads of up to 1.5x the rated torque are acceptable.



MODEL BKH

SIZE		15		30		60		80		150		200		300		500		800		1500		4000	
Rated torque (Nm)	T_{rw}	15		30		60		80		150		200		300		500		800		1500		4000	
Overall length (mm)	A^2	59	66	69	77	83	93	94	106	95	107	105	117	111	125	133	146	140	166	225			
Outside diameter (mm)	B	49		55		66		81		81		90		110		124		134		157		200	
Fit length (mm)	C	22		27		31		36		36		41		43		51		45		55		85	
Inside diameter possible from ϕ to ϕ H7 (mm)	D_1/D_2	8-28		10-30		12-35		14-42		19-42		22-45		24-60		35-60		40-75		50-80		50-90	
Fastening screw ISO 4762	E	M5		M6		M8		M10		M10		M12		M12		M16		M16		M20		M24	
Tightening torque of the fastening screw (Nm)		8		15		40		50		70		120		130		200		250		470		1200	
Distance between centerlines (mm)	F	17.5		19		23		27		27		31		39		41		48		55		65	
Distance (mm)	G	7		7.5		9.5		12		12		12.5		14		16.5		18		22.5		28	
Distance (mm)	H^2	29	36	35	43	41	51	47	59	48	60	50	62	55	69	61	75	65.5	71	109			
Moment of inertia (10^{-3} kgm ²)	J_{gr}	0.07	0.08	0.14	0.15	0.23	0.26	0.65	0.67	2.5	3.2	4.5	5.4	8.5	10.5	17.3	19.6	24.3	49.2	165			
Hub material		Al optional steel		Al optional steel		Al optional steel		Al optional steel		steel optional AL		steel optional AL		steel optional AL		steel optional AL		steel		steel		steel	
Approximate weight (kg)		0.15		0.3		0.4		0.8		1.7		2.5		4		7.5		7		12		28	
Torsional stiffness (10^3 Nm/rad)	C_t	20	15	39	28	76	55	129	85	175	110	191	140	450	350	510	500	780	1304	3400			
Axial \pm (mm)	Max. values	1	2	1	2	1.5	2	2	3	2	3	2	3	2.5	3.5	2.5	3.5	3.5	3.5	3.5	3.5	3.5	3.5
Lateral \pm (mm)		0.15	0.2	0.2	0.25	0.2	0.25	0.2	0.25	0.2	0.25	0.25	0.3	0.25	0.3	0.25	0.3	0.35	0.35	0.35	0.35	0.35	0.4
Angular \pm (degree)		1	1.5	1	1.5	1	1.5	1	1.5	1	1.5	1	1.5	1	1.5	1	1.5	1	1.5	1.5	1.5	1.5	1.5
Axial spring stiffness (N/mm)	C_s	25	15	50	30	72	48	48	32	82	52	90	60	105	71	70	48	100	320	565			
Lateral spring stiffness (N/mm)	C_l	475	137	900	270	1200	420	920	290	1550	435	2040	610	3750	1050	2500	840	2000	3600	6070			

ORDERING EXAMPLE	BK2 / BKH	80	94	20	22.23	XX
Model	●					
Size		●				
Overall length mm			●			
Bore D1 H7				●		
Bore D2 H7					●	

Special designation only (e.g. anodized hubs).

For custom features place an XX at the end of the part number and describe the special requirements (e.g. BKH / 80 / 94 / 20 / 22.23 / XX; XX-finely balanced for 25,000 rpm)