

BK1

WITH FLANGE MOUNTING

15 - 10,000 Nm



PROPERTIES

FEATURES

- ▶ For simple flange mounting to special drive components
- ▶ custom flange patterns available

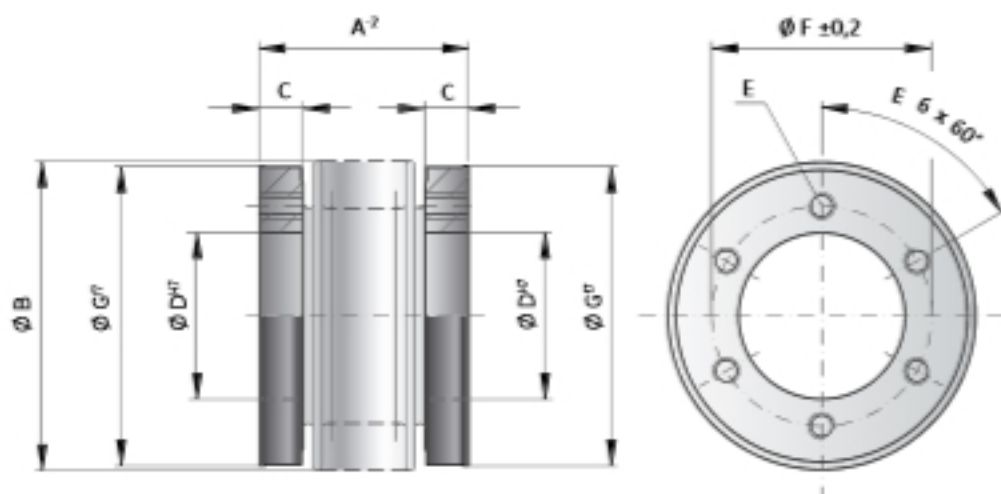
MATERIAL

- ▶ **Bellows:** high grade stainless steel

- ▶ **Hubs:** steel

DESIGN

Two mounting flanges concentrically assembled to the flexible bellows. Brief overloads of up to 1.5x the rated torque are acceptable.



MODEL BK1

SIZE		15		30		60		150		200		300		500		800		1500		4000		6000		10000	
Rated torque (Nm)	T_{RN}	15		30		60		150		200		300		500		800		1500		4000		6000		10000	
Overall length (mm)	A^2	30	37	36	44	43	53	50	62	53	65	56	70	64	77	81	100	145	138	150					
Outside diameter of bellows (mm)	B	49		55		66		81		90		110		124		133		157		200		253		303	
Fit length/thread depth (mm)	C	7.5		10		11		13		14.5		15		16		18		22		30		30		36	
Inside diameter H7 (mm)	D	25		28		38		50		58		65		70		75		85		100		145		190	
Fastening threads	E	6 x M5		6 x M5		6 x M6		6 x M6		6 x M6		6 x M8		6 x M8		6 x M10		6 x M16		6 x M20		8 x M20		8 x M24	
Bolt circle diameter ± 0.2 (mm)	F	35		37		46		62		70		80		94		90		110		140		190		234	
Outside diameter I7 (mm)	G	49		55		66		81		90		110		122		116		140		182		235		295	
Moment of inertia (10^{-3} kgm ²)	J_{ges}	0.07	0.08	0.14	0.15	0.30	0.32	0.90	0.95	1.30	1.40	1.95	2.10	3.0	3.4	4.3	10.6	46	132	350					
Approximate weight (kg)		0.15		0.2		0.3		0.6		0.8		1.35		1.8		1.9		3.3		8.9		13.9		23.7	
Torsional stiffness (10^3 Nm/rad)	C_t	20	15	39	28	76	55	175	110	191	140	450	350	510	500	780	1304	3400	5700	10950					
Axial ± (mm)	Max. values	1	2	1	2	1.5	2	2	3	2	3	2.5	3.5	2.5	3.5	3.5	3.5	3.5	3.5	3	3				
Lateral ± (mm)		0.15	0.2	0.2	0.25	0.2	0.25	0.2	0.25	0.25	0.3	0.25	0.3	0.3	0.35	0.35	0.35	0.35	0.4	0.4	0.4				
Angular ± (degree)		1	1.5	1	1.5	1	1.5	1	1.5	1	1.5	1	1.5	1	1.5	1.5	1.5	1.5	1.5	1.5	1.5				
Axial spring stiffness (N/mm)	C_a	25	15	50	30	72	48	82	52	90	60	105	71	70	48	100	320	565	1030	985					
Lateral spring stiffness (N/mm)	C_s	475	137	900	270	1200	420	1550	435	2040	610	3750	1050	2500	840	2000	3600	6070	19200	21800					

ORDERING EXAMPLE	BK1	150	62	XX
Model	●			
Size		●		
Overall length mm			●	
Special designation only (e.g. high speed balancing).				
For custom features place an XX at the end of the part number and describe the special requirements (e.g. BK1 / 150 / 62 / XX; XX-finely balanced for 25,000 rpm)				